



---

# ***Sample Characterization of***

***PcAraf51A***

***CtCDP***

**Winter Seminar 2016 at MFB**

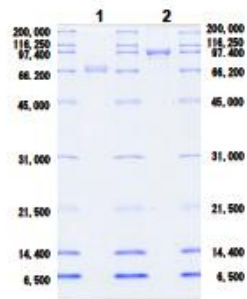
# PAGE Analysis



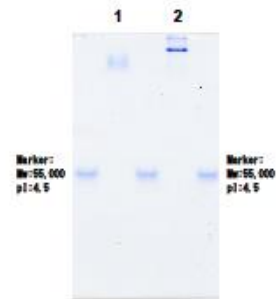
## PAGE Analysis

Date: November. 18, 2016  
Sample Received: November. 18, 2016  
Protein Name: 1. PcAraf5IA  
2. CtCDP  
冬の学校  
東京大学 五十嵐先生  
性状確認

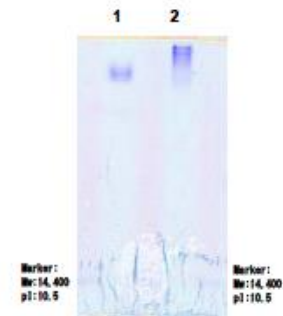
Sample purified by:  
PAGE Type: SDS-PAGE under the reduced condition  
Native-PAGE under the non-reduced condition  
Native-PAGE under the non-reduced and acidic condition  
Gel Concentration: SDS-PAGE 15.0%  
Native-PAGE 12.0%  
Native-PAGE 12.0%(acidic condition)



SDS- PAGE under the reduced condition

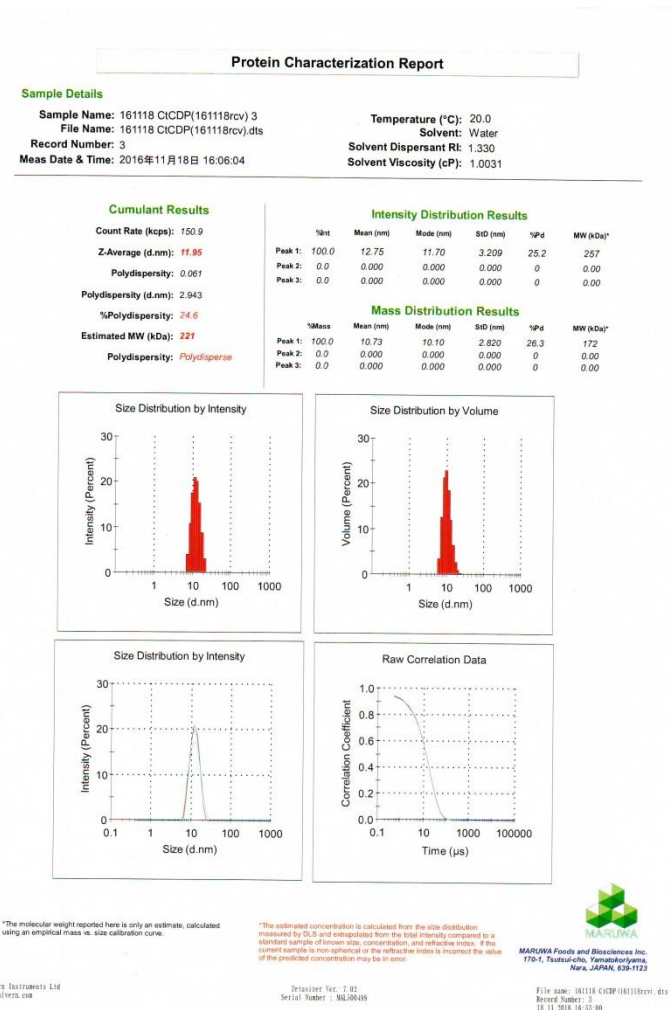
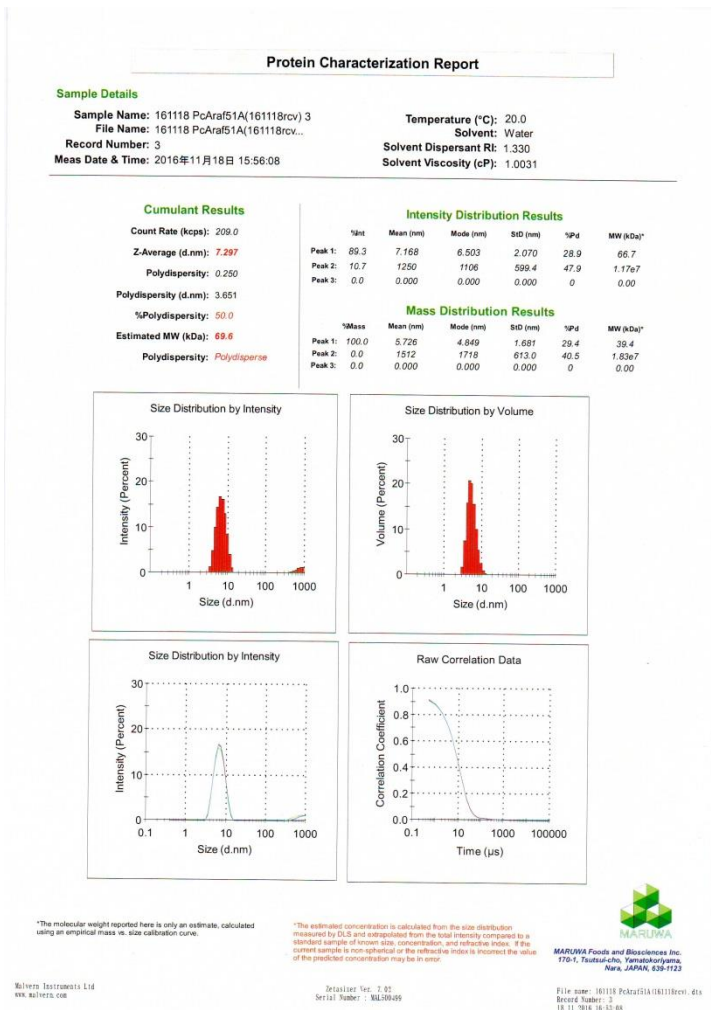


Native-PAGE under the non-reduced condition



Native-PAGE under the non-reduced and acidic condition

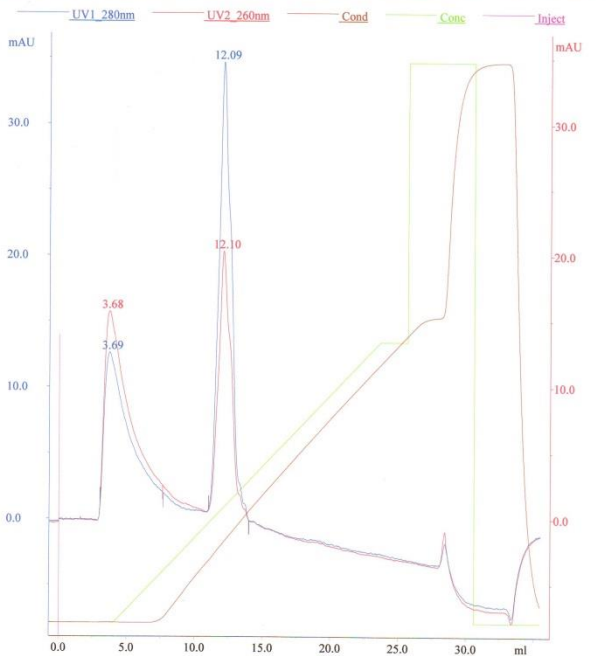
# DLS Analysis



# Chromatography Analysis



PcAraF51A(161118rev) A280=17.42 2.7ul SuperQ0-50%B  
 UNICORN 5.31 (Build 743)  
 11/21/2016 12:39:45 PM Tokyo Standard Time  
 Result file: c:\\_default\today\Prof Igarashi\PcAraF51A(161118rev)\PcAraF51A(161118rev) A2801742 27ul SuperQ050B001  
 Method file: C:\\_default\Standard\SuperQ\SuperQ

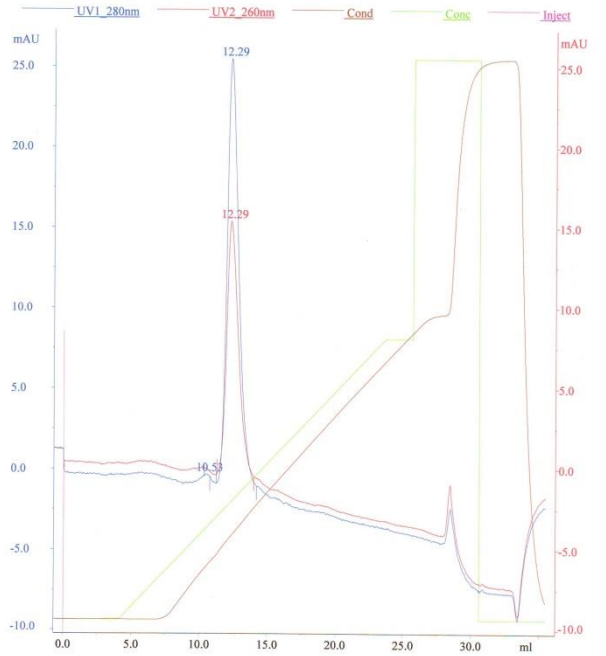


MARUWA Foods and Biosciences, Inc AKTA1.

1 (3)

1. Anion Exchange : pass
2. Sugar treatment
3. Hydrophobic resin

CtCDP(161118rev) A280=12.55 3.2ul SuperQ0-50%B  
 UNICORN 5.31 (Build 743)  
 11/21/2016 02:11:50 PM Tokyo Standard Time  
 Result file: c:\\_default\today\Prof Igarashi\CtCDP(161118rev)\CtCDP(161118rev) A2801255 32ul SuperQ050B001  
 Method file: C:\\_default\Standard\SuperQ\SuperQ



MARUWA Foods and Biosciences, Inc AKTA1.

1 (3)

1. Talon
2. Anion Exchange